

# Barwon-South Western Region



Population growth in Barwon-South Western region has been lower than average since 2002 and is projected to remain somewhat lower than average though to 2022. The 0-14 age group is slightly over represented compared with the Victorian average, and persons aged 45+ are also over represented, while those aged 25-44 are underrepresented. There is a slightly higher Aboriginal population than the Victorian average, but lower cultural diversity, with only 7.3% born in a non-English speaking country. The rate of offending is low, and volunteering is above average. Mortgage stress is below average, while rental stress is slightly higher than average. Cancer incidence is higher than average, as are acute ambulatory care sensitive conditions. The percentage of persons and males who are smokers is the highest of all the regions, but the percentage of persons not meeting the physical activity guidelines is second lowest. The percentages of breast feeding and childhood immunisation are above average, as is cancer screening participation. Inpatient separations are around average, with 57.5% of regional separations from Geelong Hospital. Projected growth in inpatient separations is below average, and the rates of HACC and mental health clients are above average.



# 1 Community capacity

## Geography

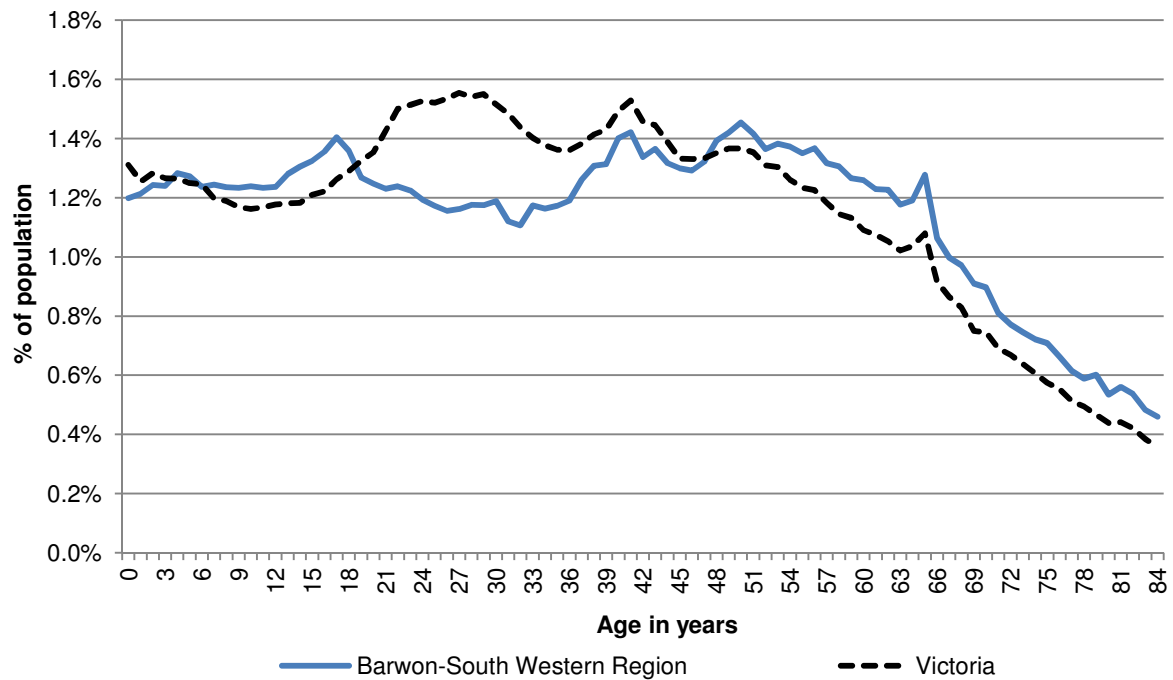
Metropolitan/rural	Barwon-South Western Region
Departmental region	Barwon-South Western Region
Area of LGA	29,132 km <sup>2</sup>
ASGS LGA code	
Most populous community in LGA	
Distance to Melbourne	km
Travel time to Melbourne	
Remoteness area	
ARIA measures (low/average/high)	

## Land use

Business	0.0%	Industrial	0.2%
Residential	0.9%	Rural	79.6%
Other	19.3%		

## Demographics

2012 population profile



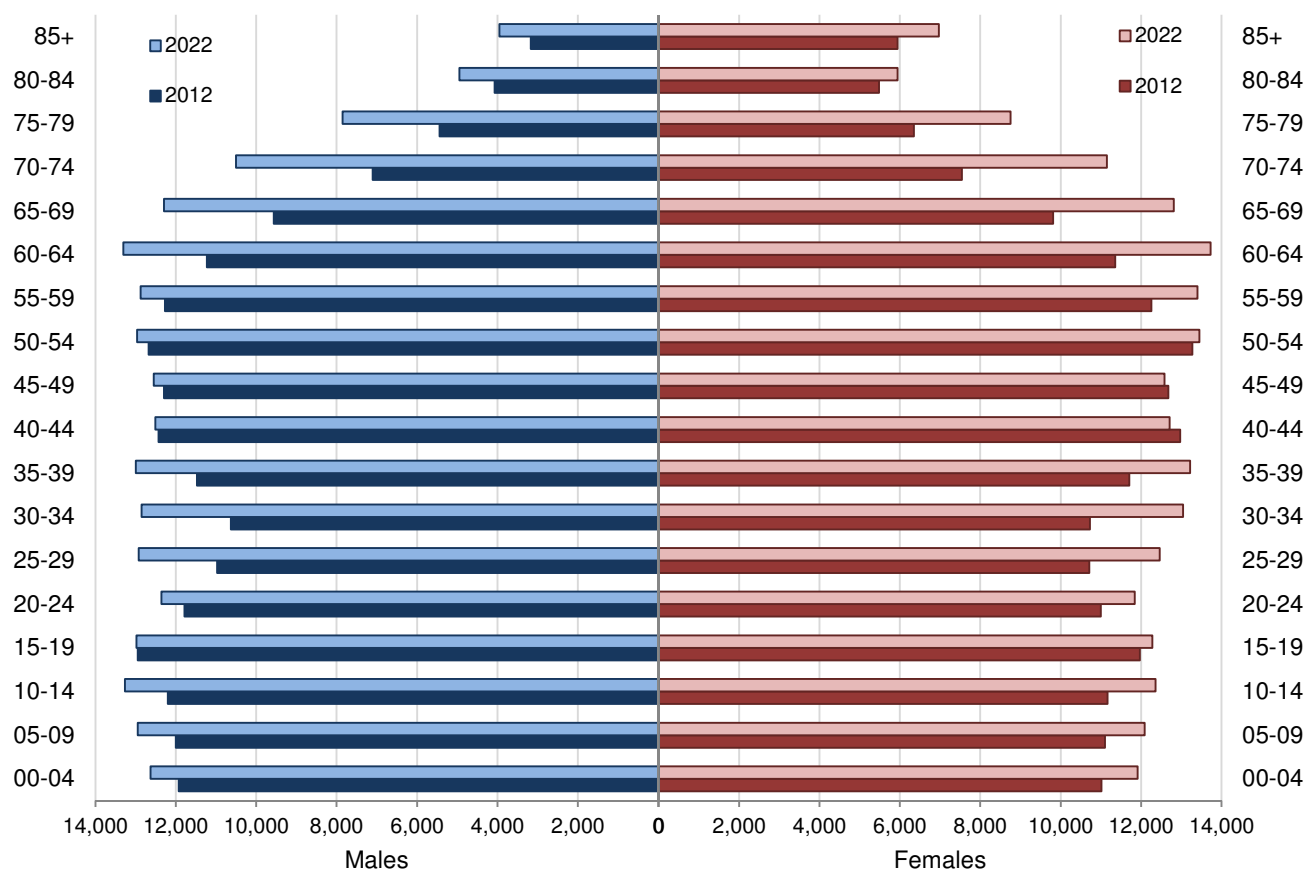
### Per annum population change

Time period	LGA	Victoria
2002–2012, Percentage of actual change	0.91%	1.57%
2012–2022, Percentage of projected change	1.18%	1.58%

### 2012 population by age and sex

	Females	Males	Total	% total LGA population	% total VIC population
00–14	33,288	36,137	69,425	18.7%	18.3%
15–24	22,967	24,733	47,700	12.8%	13.6%
25–44	46,133	45,516	91,649	24.7%	29.2%
45–64	49,584	48,471	98,055	26.4%	24.5%
65–84	29,177	26,181	55,358	14.9%	12.4%
85+	5,945	3,169	9,114	2.5%	2.0%
<b>Total</b>	<b>187,094</b>	<b>184,207</b>	<b>371,301</b>	<b>100.0%</b>	<b>100.0%</b>

### Population projections by age group and sex, 2012 and 2022



## Fertility rate

	LGA measure	Rank among LGAs	Victoria measure
Total fertility rate	NA	NA	1.82
Teenage fertility rate	12.85	5	10.38

## Diversity

	LGA measure	Rank among LGAs	Victoria measure
Aboriginal and Torres Strait Islander population	1.2%	5	0.8%
Percentage of population born overseas	13.2%	4	27.7%
Percentage of population born in non-English speaking country	7.3%	4	20.9%
Top 5 overseas countries of birth	United Kingdom 4.3% New Zealand 1.1% Netherlands 0.7% Italy 0.6% Germany 0.5%		
Percentage speaking language other than English at home	7.0%	4	24.2%
Top 5 languages spoken other than English	Italian 0.9% Croatian 0.7% German 0.3% Greek 0.3% Macedonian 0.3%		
Percentage with low English proficiency	1.0%	5	4.0%
Top 5 ancestries	English 38.4% Australian 28.2% Irish 8.0% Scottish 4.6% German 2.5%		
New settler arrivals per 100,000 population	486.1	4	1,415.1
Humanitarian arrivals as a percentage of new settlers	19.1%	1	7.2%
Community acceptance of diverse cultures	NA	NA	50.6%

## Social engagement and crime

	LGA measure	Rank among LGAs	Victoria measure
Index of Relative Socio-Economic Disadvantage	NA	NA	NA
Percentage of households with broadband internet	67.2%	4	72.6%
Gaming machine losses per head of adult population	\$501.9	4	\$549.5
Family incidents per 1,000 population	11.1	5	10.8
Drug usage and possession offences per 1,000 population	2.5	7	3.8
Total offences per 1,000 population	65.1	7	72.2
Percentage who feel safe walking alone during the day	NA	NA	97.0%
Percentage who feel safe on street alone after dark	NA	NA	70.3%
Percentage who help out as a volunteer	24.0%	5	19.3%
Participation in citizen engagement in last year	NA	NA	50.5%
Social networking used to organise time with family/friends	27.9%	7	35.1%
Percentage who believe there are good facilities and services in the LGA	83.4%	4	85.2%

## 2 Socio-economic factors

### Economic and employment characteristics

	LGA measure	Rank among LGAs	Victoria measure
Unemployment rate	5.7%	4	5.8%
Percentage of individuals with income less than \$400 per week	41.3%	5	39.9%
Percentage of females with income less than \$400 per week	49.0%	5	47.1%
Percentage of males with income less than \$400 per week	33.0%	5	32.1%
Percentage of families headed by one parent	16.0%	4	15.5%
Proportion who are female	82.6%	3	82.8%
Proportion who are male	17.4%	6	17.2%
Median household income	NA	NA	\$1,216
Percentage of low income families with children	9.2%	6	8.7%
Percentage of population with food insecurity	6.0%	3	4.6%

## Housing, transport and sustainability characteristics

	LGA measure	Rank among LGAs	Victoria measure
Mortgage stress	10.3%	7	11.4%
Rental stress	27.0%	3	25.1%
Percentage of rental housing that is affordable	32.9%	5	18.4%
Median house price	NA	NA	\$412,000
Median rent for three bedroom home	\$300	4	\$320
New dwellings approved per 1,000 population	8.2	2	8.6
Social housing as a percentage of total dwellings	3.9%	5	3.8%
Number of social housing dwellings	6,580	NA	84,037
Percentage of work journeys which are by car	70.4%	4	66.2%
Percentage of work journeys which are by public transport	3.4%	4	11.1%
Persons with at least 2 hour daily commute	7.8%	4	11.6%
Percentage of dwellings with no motor vehicle	6.7%	4	8.7%
Passenger vehicles per 1,000 population	622.7	4	606.8
Percentage of passenger vehicles more than ten years old	52.2%	5	47.7%

## Education characteristics

	LGA measure	Rank among LGAs	Victoria measure
Full-time equivalent students	62,295	NA	869,698
Percentage of year 9 students who attain national minimum standards in literacy	93.8%	2	93.5%
Percentage of year 9 students who attain national minimum standards in numeracy	94.8%	3	95.0%
Percentage of 19 year olds completing year 12	83.6%	4	84.2%
Percentage of persons who did not complete year 12	55.2%	5	43.7%
Percentage of persons who completed a higher education qualification	34.5%	4	45.7%
Percentage of students attending government school	61.2%	5	61.6%

## 3 Health and wellbeing

### Health conditions

	LGA measure	Rank among LGAs	Victoria measure
Percentage of persons reporting asthma	12.4%	1	10.9%
Percentage of persons reporting type 2 diabetes	4.3%	7	5.0%

Percentage of persons reporting high blood pressure	24.2%	6	24.5%
Percentage of persons reporting heart disease	7.4%	2	6.9%
Percentage of persons reporting osteoporosis	5.0%	7	5.3%
Percentage of persons reporting arthritis	23.1%	2	19.8%
Percentage of persons overweight	34.9%	3	32.5%
Percentage of females overweight	27.6%	3	24.6%
Percentage of males overweight	41.8%	3	40.6%
Percentage of persons obese	18.7%	5	17.3%
Percentage of females obese	19.6%	5	17.2%
Percentage of males obese	17.5%	6	17.4%
Cancer incidence per 100,000 population	596.6	4	522.0
Cancer incidence per 100,000 females	573.5	2	468.1
Cancer incidence per 100,000 males	620.0	5	577.0
Poor dental health	6.0%	5	5.6%
Notifications of Pertussis per 1,000 population	0.9	4	0.8
Notifications of Influenza per 1,000 population	1.4	2	1.1
Notifications of Chlamydia per 1,000 population	3.4	5	3.5

## Health behaviours

	LGA measure	Rank among LGAs	Victoria measure
Percentage of persons 18+ who are current smokers	19.2%	1	15.7%
Percentage of females 18+ who are current smokers	14.6%	4	12.9%
Percentage of males 18+ who are current smokers	24.7%	1	18.5%
Percentage of persons at risk of short-term harm from alcohol consumption	11.5%	2	9.1%
Percentage of persons who do not meet fruit and vegetable dietary guidelines	52.7%	3	51.1%
Percentage of females who do not meet fruit and vegetable dietary guidelines	45.5%	5	45.5%
Percentage of males who do not meet fruit and vegetable dietary guidelines	60.2%	2	56.9%
Percentage of persons who drink soft drink every day	18.4%	4	15.9%
Percentage of persons who share a meal with family at least 5 days per week	69.5%	5	66.3%
Percentage of persons who do not meet physical activity guidelines	29.4%	7	32.1%
Percentage of females who do not meet physical activity guidelines	29.9%	7	33.6%
Percentage of males who do not meet physical activity guidelines	27.9%	7	30.4%

Percentage of persons who sit for at least 7 hours per day	27.4%	4	32.6%
Percentage of persons who visit a green space at least once per week	51.9%	3	50.7%
Percentage of breast cancer screening participation	NA	NA	54.6%
Percentage of cervical cancer screening participation	62.7%	2	60.2%
Percentage of bowel cancer screening participation	40.1%	3	36.5%

### Children and young person characteristics

	LGA measure	Rank among LGAs	Victoria measure
Low birth weight babies	6.3%	7	6.6%
Percentage of infants fully breastfed at three months	54.0%	2	51.4%
Percentage of children fully immunised at 24–27	94.8%	2	91.7%
Percentage of children attending 3 year old maternal and child health checks	66.3%	6	64.4%
Kindergarten participation rate	100.0%	NA	98.0%
Percentage of children with kindergarten subsidy	29.5%	5	24.6%
Percentage of children with emotional or behavioural problems at school entry	5.2%	4	4.3%
Percentage of children with speech or language problems at school entry	15.5%	5	13.8%
Percentage of adolescents who report being recently bullied	18.9%	5	17.9%
Percentage of children developmentally vulnerable in one or more domains	18.1%	7	19.5%
Percentage of children developmentally vulnerable in two or more domains	8.7%	7	9.5%
Rate of substantiated child abuse per 1,000 population	6.2	6	6.7
Rate of children on child protection orders per 1,000 population	8.6	3	5.2
Rate of children in out of home care per 1,000 population	6.6	4	4.6

### Aged and disability characteristics

	LGA measure	Rank among LGAs	Victoria measure
Percentage of population with need for assistance with core activity	5.6%	5	5.0%
People with severe and profound disability living in the community (all ages)	4.3%	5	4.0%



People with severe and profound disability living in the community (65+)	12.3%	4	13.7%
Disability support pension recipients per 1,000 eligible population	67.5	5	54.9
Percentage of persons aged 75+ who live alone	39.7%	2	35.9%
Proportion who are female	74.6%	2	73.9%
Proportion who are male	25.4%	7	26.1%
Aged care places (high care) per 1,000 eligible population	45.1	1	40.9
Aged care places (low care) per 1,000 eligible population	48.1	2	44.4
Age pension recipients per 1,000 eligible population	715.8	6	694.3

### Life expectancy and wellbeing

	LGA measure	Rank among LGAs	Victoria measure
Male life expectancy	79.4	4	80.3
Female life expectancy	84.0	6	84.4
Percentage persons reporting fair or poor health	13.9%	8	15.9%
Percentage of females reporting fair or poor health	13.9%	5	16.2%
Percentage of males reporting fair or poor health	13.8%	7	15.6%
Percentage of persons reporting a high/very high degree of psychological distress	11.6%	3	11.1%
Percentage of persons sleeping less than 7 hours per day	29.6%	7	31.5%
Percentage persons with adequate work-life balance	NA	NA	53.1%

### Injury and mortality

	LGA measure	Rank among LGAs	Victoria measure
Unintentional injuries treated in hospital per 1,000 population	62.2	5	59.1
Intentional injuries treated in hospital per 1,000 population	3.3	5	3.1
Percentage of unintentional injuries due to falls	39.2%	3	37.3%
Indirect standardised death rate per 100,000 population	NA	NA	5.6
Avoidable deaths per 100,000 population, 0–74 years, due to all causes	178.4	5	148.2
Avoidable deaths per 100,000 population, 0–74 years, due to cancer	64.9	4	61.4
Avoidable deaths per 100,000 population, 0–74 years, due to cardiovascular diseases	47.6	3	39.8
Avoidable deaths per 100,000 population, 0–74 years, due to respiratory diseases	11.6	3	8.4

## 4 Service system

### Services and access

	LGA measure	Rank among LGAs	Victoria measure
Medicare Local that LGA is located in			
Primary care partnership			
Number of hospitals/health services	25	NA	305
General practitioners per 1,000 population	1.2	2	1.2
General practice clinics per 1,000 population	0.5	5	0.5
Dental service sites per 1,000 population	0.2	4	0.2
Allied health service sites per 1,000 population	0.6	5	0.5
Pharmacies per 1,000 population	0.2	5	0.2
Number of schools	189	NA	2,238
Percentage of population near to public transport	61.9%	4	74.2%
Percentage of population with private health insurance	44.1%	4	48.0%

### Hospital utilisation

	LGA measure	Rank among LGAs	Victoria measure
Hospital inpatient separations per 1,000 population	417.6	6	419.8
Percentage of inpatient separations in private hospital	31.0%	5	39.4%
Main public hospital attended	Geelong Hospital		
Separations from most frequently attended public hospital	57.5%	NA	NA
Average length of stay, public hospital inpatients (days)	3.2	4	3.2
Average length of stay, total hospital inpatients (days)	3.0	3	2.9
Per annum change in hospital inpatient separations, 2002–03 to 2012–13	1.90%	7	2.76%
Projected per annum change in separations, 2012–13 to 2021–22	1.79%	4	2.78%
Ambulatory care sensitive conditions (ACSC) – admission rate per 1,000 population	41.2	4	36.1
ACSC – average length of stay (days)	4.8	8	5.1
Ambulatory Care Sensitive Conditions (ACSC) – acute admissions per 1,000 population	14.8	2	12.7
ACSC – chronic admissions per 1,000 population	26.6	5	23.5
ACSC – vaccine preventable admissions per 1,000 population	0.9	3	0.9
Emergency Department presentations per 1000 population	246.3	6	258.8

ED presentations which are primary care type per 1000 population	95.0	6	107.5
--	------	---	-------

### Other service utilisation

	LGA measure	Rank among LGAs	Victoria measure
GP attendances per 1,000 population – male	4,115.3	6	4,633.4
GP attendances per 1,000 population – female	5,686.7	7	6,257.0
GP attendances per 1,000 population – total	4,905.2	6	5,452.1
HACC clients aged 0–69 per 1,000 target	177.9	4	142.3
HACC clients aged 70 and over per 1,000 target population	508.9	3	407.9
Drug and alcohol clients per 1,000 population	6.6	5	5.8
Registered mental health clients per 1,000 population	14.5	4	11.1