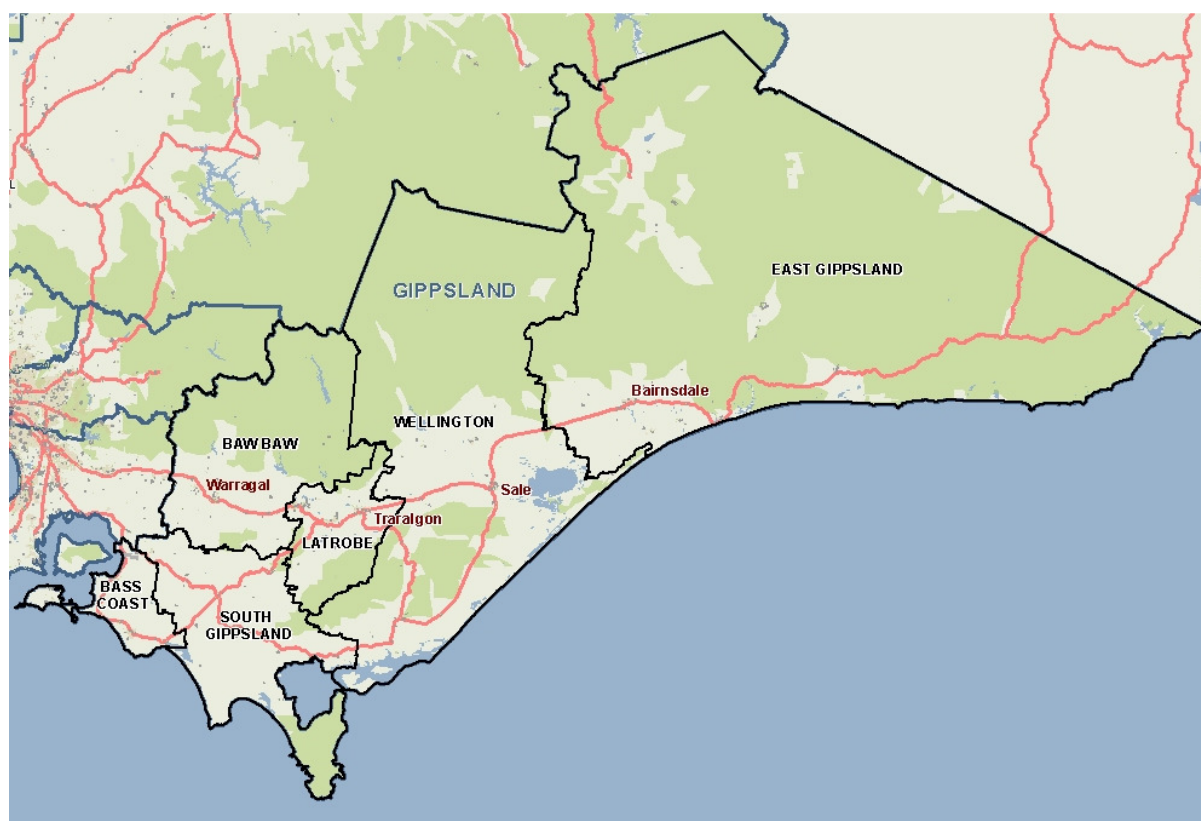


Gippsland Region



Gippsland has experienced below average population growth since 2002 and growth is projected to remain comparatively slow through to 2022. People aged between 15 and 44 are underrepresented while those aged 45+ are overrepresented. The teenage fertility rate is the highest of all the regions. Cultural diversity is lower than average, with around 6.1% of the population born in a non-English speaking country. The rates of both total new settler arrivals and humanitarian arrivals are the lowest in the state. The crime rate is highest in the state, and a lower than average percentage believe there are good services and facilities in the LGA. Individual and household incomes are lower than average and rental stress is the highest in the state despite rents being the cheapest and most affordable in the state. Educational attainment is generally low relative to the rest of the state. Gippsland generally scores below average on most health indicators. The percentages of the population with need for assistance and severe and profound disability are the highest in the state, as are rates of disability and aged pension recipients. Male life expectancy is the lowest in the state. Injury rates are the highest in the state, as are avoidable deaths due to cancer. The inpatient separation rate is highest in the state, as are emergency department presentations.



1 Community capacity

Geography

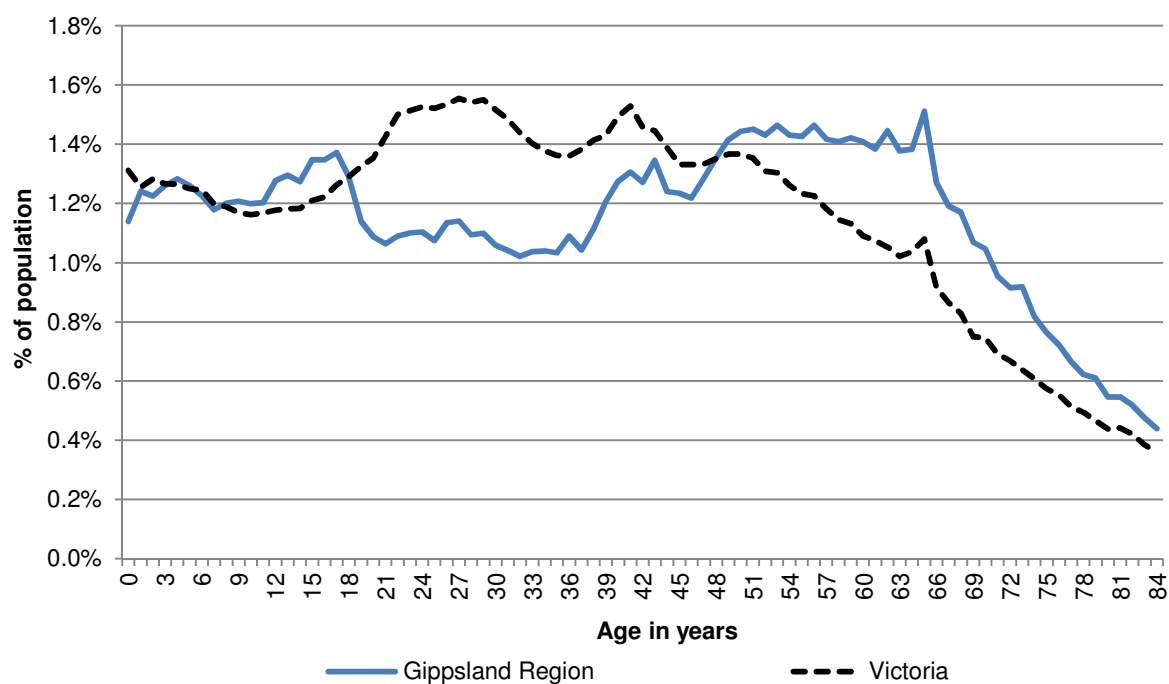
Metropolitan/rural	Gippsland Region
Departmental region	Gippsland Region
Area of LGA	41,375 km ²
ASGS LGA code	
Most populous community in LGA	
Distance to Melbourne	km
Travel time to Melbourne	
Remoteness area	
ARIA measures (low/average/high)	

Land use

Business	0.0%	Industrial	0.1%
Residential	0.6%	Rural	35.6%
Other	63.6%		

Demographics

2012 population profile



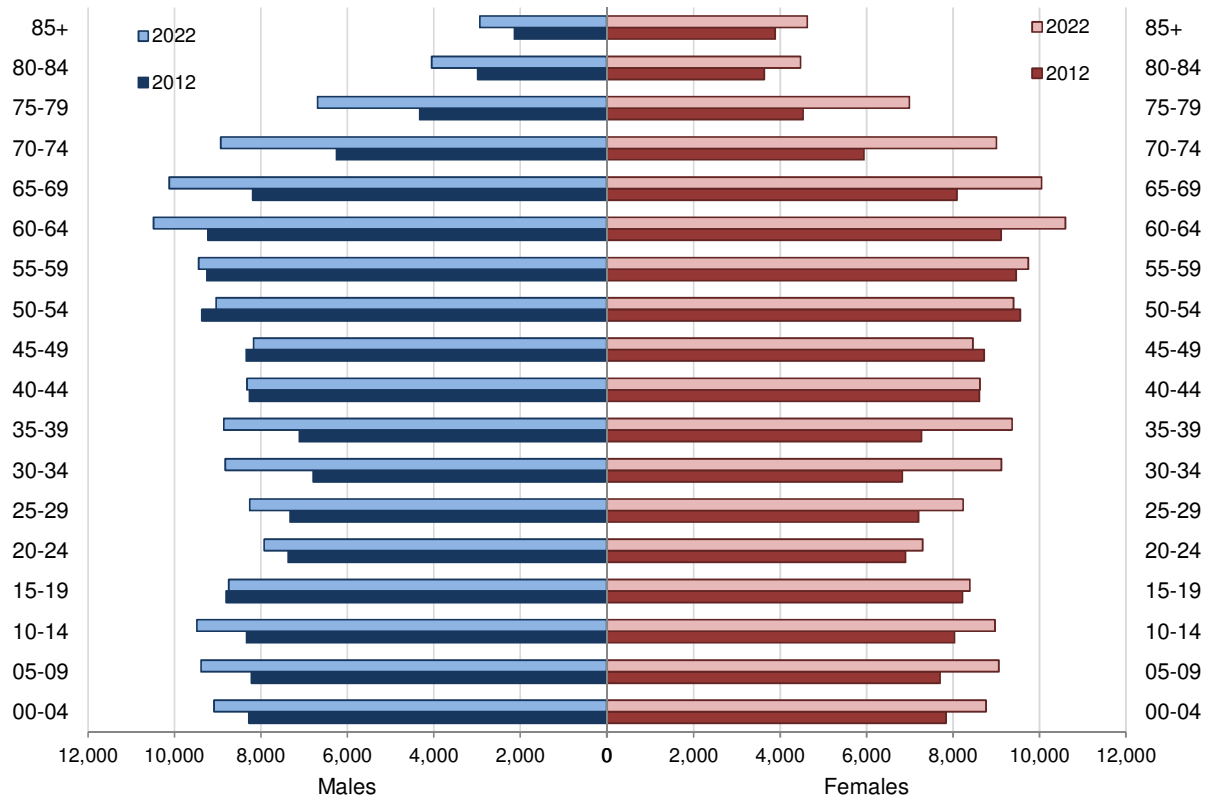
Per annum population change

Time period	LGA	Victoria
2002–2012, Percentage of actual change	1.02%	1.57%
2012–2022, Percentage of projected change	1.35%	1.58%

2012 population by age and sex

	Females	Males	Total	% total LGA population	% total VIC population
00–14	23,584	24,833	48,417	18.5%	18.3%
15–24	15,125	16,180	31,304	11.9%	13.6%
25–44	29,906	29,496	59,401	22.7%	29.2%
45–64	36,837	36,188	73,025	27.9%	24.5%
65–84	22,216	21,762	43,978	16.8%	12.4%
85+	3,884	2,139	6,023	2.3%	2.0%
Total	131,552	130,597	262,149	100.0%	100.0%

Population projections by age group and sex, 2012 and 2022



Fertility rate

	LGA measure	Rank among LGAs	Victoria measure
Total fertility rate	NA	NA	1.82
Teenage fertility rate	20.80	1	10.38

Diversity

	LGA measure	Rank among LGAs	Victoria measure
Aboriginal and Torres Strait Islander population	1.8%	3	0.8%
Percentage of population born overseas	12.7%	5	27.7%
Percentage of population born in non-English speaking country	6.1%	6	20.9%
Top 5 overseas countries of birth	United Kingdom 4.9% New Zealand 1.1% Netherlands 1.0% Italy 0.7% Germany 0.7%		
Percentage speaking language other than English at home	4.7%	7	24.2%
Top 5 languages spoken other than English	Italian 0.9% German 0.4% Dutch 0.3% Greek 0.3% Mandarin 0.2%		
Percentage with low English proficiency	0.6%	7	4.0%
Top 5 ancestries	English 40.5% Australian 29.5% Irish 6.1% Scottish 4.5% Italian 2.8%		
New settler arrivals per 100,000 population	261.7	8	1,415.1
Humanitarian arrivals as a percentage of new settlers	0.6%	8	7.2%
Community acceptance of diverse cultures	NA	NA	50.6%

Social engagement and crime

	LGA measure	Rank among LGAs	Victoria measure
Index of Relative Socio-Economic Disadvantage	NA	NA	NA
Percentage of households with broadband internet	64.8%	7	72.6%
Gaming machine losses per head of adult population	\$563.4	2	\$549.5
Family incidents per 1,000 population	17.4	1	10.8
Drug usage and possession offences per 1,000 population	4.2	3	3.8
Total offences per 1,000 population	89.8	1	72.2
Percentage who feel safe walking alone during the day	NA	NA	97.0%
Percentage who feel safe on street alone after dark	NA	NA	70.3%
Percentage who help out as a volunteer	24.9%	4	19.3%
Participation in citizen engagement in last year	NA	NA	50.5%
Social networking used to organise time with family/friends	31.0%	4	35.1%
Percentage who believe there are good facilities and services in the LGA	75.6%	7	85.2%

2 Socio-economic factors

Economic and employment characteristics

	LGA measure	Rank among LGAs	Victoria measure
Unemployment rate	5.1%	7	5.8%
Percentage of individuals with income less than \$400 per week	44.3%	1	39.9%
Percentage of females with income less than \$400 per week	52.2%	1	47.1%
Percentage of males with income less than \$400 per week	36.0%	2	32.1%
Percentage of families headed by one parent	15.8%	5	15.5%
Proportion who are female	81.8%	8	82.8%
Proportion who are male	18.2%	1	17.2%
Median household income	NA	NA	\$1,216
Percentage of low income families with children	10.8%	2	8.7%
Percentage of population with food insecurity	6.8%	2	4.6%

Housing, transport and sustainability characteristics

	LGA measure	Rank among LGAs	Victoria measure
Mortgage stress	11.7%	3	11.4%
Rental stress	27.7%	1	25.1%
Percentage of rental housing that is affordable	74.2%	1	18.4%
Median house price	NA	NA	\$412,000
Median rent for three bedroom home	\$250	8	\$320
New dwellings approved per 1,000 population	7.2	6	8.6
Social housing as a percentage of total dwellings	3.7%	6	3.8%
Number of social housing dwellings	4,818	NA	84,037
Percentage of work journeys which are by car	70.8%	2	66.2%
Percentage of work journeys which are by public transport	1.4%	8	11.1%
Persons with at least 2 hour daily commute	5.2%	6	11.6%
Percentage of dwellings with no motor vehicle	6.6%	6	8.7%
Passenger vehicles per 1,000 population	636.2	1	606.8
Percentage of passenger vehicles more than ten years old	54.2%	4	47.7%

Education characteristics

	LGA measure	Rank among LGAs	Victoria measure
Full-time equivalent students	42,536	NA	869,698
Percentage of year 9 students who attain national minimum standards in literacy	92.3%	8	93.5%
Percentage of year 9 students who attain national minimum standards in numeracy	93.7%	8	95.0%
Percentage of 19 year olds completing year 12	74.5%	7	84.2%
Percentage of persons who did not complete year 12	62.4%	1	43.7%
Percentage of persons who completed a higher education qualification	26.6%	8	45.7%
Percentage of students attending government school	67.0%	2	61.6%

3 Health and wellbeing

Health conditions

	LGA measure	Rank among LGAs	Victoria measure
Percentage of persons reporting asthma	11.3%	5	10.9%
Percentage of persons reporting type 2 diabetes	5.4%	3	5.0%

Percentage of persons reporting high blood pressure	27.9%	1	24.5%
Percentage of persons reporting heart disease	7.0%	5	6.9%
Percentage of persons reporting osteoporosis	5.3%	3	5.3%
Percentage of persons reporting arthritis	21.2%	4	19.8%
Percentage of persons overweight	35.3%	1	32.5%
Percentage of females overweight	28.6%	2	24.6%
Percentage of males overweight	42.0%	2	40.6%
Percentage of persons obese	19.6%	4	17.3%
Percentage of females obese	20.3%	3	17.2%
Percentage of males obese	19.1%	4	17.4%
Cancer incidence per 100,000 population	630.6	2	522.0
Cancer incidence per 100,000 females	539.7	3	468.1
Cancer incidence per 100,000 males	722.1	2	577.0
Poor dental health	8.5%	2	5.6%
Notifications of Pertussis per 1,000 population	1.6	1	0.8
Notifications of Influenza per 1,000 population	1.5	1	1.1
Notifications of Chlamydia per 1,000 population	3.3	6	3.5

Health behaviours

	LGA measure	Rank among LGAs	Victoria measure
Percentage of persons 18+ who are current smokers	18.3%	3	15.7%
Percentage of females 18+ who are current smokers	15.9%	2	12.9%
Percentage of males 18+ who are current smokers	21.0%	3	18.5%
Percentage of persons at risk of short-term harm from alcohol consumption	11.0%	3	9.1%
Percentage of persons who do not meet fruit and vegetable dietary guidelines	51.2%	6	51.1%
Percentage of females who do not meet fruit and vegetable dietary guidelines	45.6%	4	45.5%
Percentage of males who do not meet fruit and vegetable dietary guidelines	57.0%	5	56.9%
Percentage of persons who drink soft drink every day	20.2%	1	15.9%
Percentage of persons who share a meal with family at least 5 days per week	71.0%	4	66.3%
Percentage of persons who do not meet physical activity guidelines	28.2%	8	32.1%
Percentage of females who do not meet physical activity guidelines	31.1%	6	33.6%
Percentage of males who do not meet physical activity guidelines	25.1%	8	30.4%

Percentage of persons who sit for at least 7 hours per day	25.2%	7	32.6%
Percentage of persons who visit a green space at least once per week	49.1%	4	50.7%
Percentage of breast cancer screening participation	NA	NA	54.6%
Percentage of cervical cancer screening participation	60.6%	5	60.2%
Percentage of bowel cancer screening participation	41.6%	1	36.5%

Children and young person characteristics

	LGA measure	Rank among LGAs	Victoria measure
Low birth weight babies	7.6%	1	6.6%
Percentage of infants fully breastfed at three months	46.8%	8	51.4%
Percentage of children fully immunised at 24–27	95.4%	1	91.7%
Percentage of children attending 3 year old maternal and child health checks	66.4%	4	64.4%
Kindergarten participation rate	97.6%	NA	98.0%
Percentage of children with kindergarten subsidy	41.1%	1	24.6%
Percentage of children with emotional or behavioural problems at school entry	6.2%	2	4.3%
Percentage of children with speech or language problems at school entry	17.3%	2	13.8%
Percentage of adolescents who report being recently bullied	22.3%	1	17.9%
Percentage of children developmentally vulnerable in one or more domains	23.0%	1	19.5%
Percentage of children developmentally vulnerable in two or more domains	11.7%	1	9.5%
Rate of substantiated child abuse per 1,000 population	13.8	1	6.7
Rate of children on child protection orders per 1,000 population	10.6	1	5.2
Rate of children in out of home care per 1,000 population	9.9	1	4.6

Aged and disability characteristics

	LGA measure	Rank among LGAs	Victoria measure
Percentage of population with need for assistance with core activity	6.2%	1	5.0%
People with severe and profound disability living in the community (all ages)	5.0%	1	4.0%

People with severe and profound disability living in the community (65+)	11.8%	8	13.7%
Disability support pension recipients per 1,000 eligible population	88.6	1	54.9
Percentage of persons aged 75+ who live alone	38.6%	4	35.9%
Proportion who are female	71.5%	8	73.9%
Proportion who are male	28.5%	1	26.1%
Aged care places (high care) per 1,000 eligible population	35.8	8	40.9
Aged care places (low care) per 1,000 eligible population	45.4	5	44.4
Age pension recipients per 1,000 eligible population	749.8	1	694.3

Life expectancy and wellbeing

	LGA measure	Rank among LGAs	Victoria measure
Male life expectancy	78.1	8	80.3
Female life expectancy	84.0	5	84.4
Percentage persons reporting fair or poor health	15.0%	4	15.9%
Percentage of females reporting fair or poor health	14.9%	3	16.2%
Percentage of males reporting fair or poor health	15.5%	3	15.6%
Percentage of persons reporting a high/very high degree of psychological distress	12.3%	2	11.1%
Percentage of persons sleeping less than 7 hours per day	30.9%	3	31.5%
Percentage persons with adequate work-life balance	NA	NA	53.1%

Injury and mortality

	LGA measure	Rank among LGAs	Victoria measure
Unintentional injuries treated in hospital per 1,000 population	94.5	1	59.1
Intentional injuries treated in hospital per 1,000 population	4.2	2	3.1
Percentage of unintentional injuries due to falls	34.2%	6	37.3%
Indirect standardised death rate per 100,000 population	NA	NA	5.6
Avoidable deaths per 100,000 population, 0–74 years, due to all causes	187.0	2	148.2
Avoidable deaths per 100,000 population, 0–74 years, due to cancer	68.4	1	61.4
Avoidable deaths per 100,000 population, 0–74 years, due to cardiovascular diseases	47.9	2	39.8
Avoidable deaths per 100,000 population, 0–74 years, due to respiratory diseases	12.0	2	8.4

4 Service system

Services and access

	LGA measure	Rank among LGAs	Victoria measure
Medicare Local that LGA is located in			
Primary care partnership			
Number of hospitals/health services	15	NA	305
General practitioners per 1,000 population	1.2	4	1.2
General practice clinics per 1,000 population	0.6	3	0.5
Dental service sites per 1,000 population	0.2	6	0.2
Allied health service sites per 1,000 population	0.6	4	0.5
Pharmacies per 1,000 population	0.2	3	0.2
Number of schools	183	NA	2,238
Percentage of population near to public transport	34.7%	7	74.2%
Percentage of population with private health insurance	37.1%	8	48.0%

Hospital utilisation

	LGA measure	Rank among LGAs	Victoria measure
Hospital inpatient separations per 1,000 population	455.3	1	419.8
Percentage of inpatient separations in private hospital	19.8%	8	39.4%
Main public hospital attended	Latrobe Regional Hospital [Traralgon]		
Separations from most frequently attended public hospital	30.4%	NA	NA
Average length of stay, public hospital inpatients (days)	3.1	6	3.2
Average length of stay, total hospital inpatients (days)	3.0	3	2.9
Per annum change in hospital inpatient separations, 2002–03 to 2012–13	2.97%	3	2.76%
Projected per annum change in separations, 2012–13 to 2021–22	1.18%	7	2.78%
Ambulatory care sensitive conditions (ACSC) – admission rate per 1,000 population	42.0	3	36.1
ACSC – average length of stay (days)	5.4	1	5.1
Ambulatory Care Sensitive Conditions (ACSC) – acute admissions per 1,000 population	14.0	4	12.7
ACSC – chronic admissions per 1,000 population	27.8	3	23.5
ACSC – vaccine preventable admissions per 1,000 population	1.2	1	0.9
Emergency Department presentations per 1000 population	380.2	1	258.8

ED presentations which are primary care type per 1000 population	187.6	1	107.5
--	-------	---	-------

Other service utilisation

	LGA measure	Rank among LGAs	Victoria measure
GP attendances per 1,000 population – male	4,382.7	4	4,633.4
GP attendances per 1,000 population – female	6,222.7	3	6,257.0
GP attendances per 1,000 population – total	5,302.2	3	5,452.1
HACC clients aged 0–69 per 1,000 target	221.0	1	142.3
HACC clients aged 70 and over per 1,000 target population	513.1	2	407.9
Drug and alcohol clients per 1,000 population	9.3	1	5.8
Registered mental health clients per 1,000 population	14.0	5	11.1