

# Hume Region



## Population

- Actual annual population change from 2004 to 2014 was well below the state measure and projected change from 2014 to 2024 is slightly below.
- People aged 15–44 are under-represented while all other age groups are over-represented.

## Diversity

- The percentage of people of Aboriginal and Torres Strait Islander origin is second highest in the state.
- The percentage of people born overseas is well below the state measure.

## Disadvantage and social engagement

- The percentage of people who feel safe on streets alone is the highest in the state.
- The percentage of people who are definitely able to get help from neighbours is the highest in the state.
- The percentage of people who attended a local community event is the highest in the state.
- The percentage of people who rated their community as good or very good for community and support groups is the highest in the state.
- Gaming machine loss per adult population is the lowest in the state.

## Housing, transport and education

- The percentage of households with mortgage stress is the highest in the state.
- The percentage of people with at least 2 hour daily commute is the lowest in the state.
- The percentage of dwellings with no motor vehicle is the lowest in the state.

## Health status and service utilisation

- The percentage of females reporting being pre-obese is the highest in the state.
- The rate of notifications of pertussis per 100,000 population is the lowest in the state.
- The percentage of males who do not meet physical activity guidelines is the highest in the state.
- The rate of dental service sites per 1,000 population is the lowest in the state.
- The average length of stay for all hospital inpatients is the highest in the state.
- The average length of stay for all ACSC (PPH) separations is the highest in the state.
- The annual change in inpatient separations between 2004/05 and 2014/15 was the lowest in the state.
- The annual change in emergency department presentations between 2004/05 and 2014/15 was the lowest in the state.
- The rate of diagnostic imaging services per 1,000 population is the highest in the state.
- The rate of registered mental health clients per 1,000 population is the highest in the state.

## Child and family characteristics and service utilisation

- The percentage of kindergarten participation is the lowest in the state.
- The rate of Child FIRST assessments per 1,000 eligible population is the highest in the state.



## Community

### Geography

Departmental Region

Departmental Area

Most populous community

Distance to Melbourne

Travel time to Melbourne

Remoteness area

### Land use

Commercial	0.0%
Industrial	0.1%
Residential	0.7%
Rural	56.7%
Other	42.4%

## Demographics

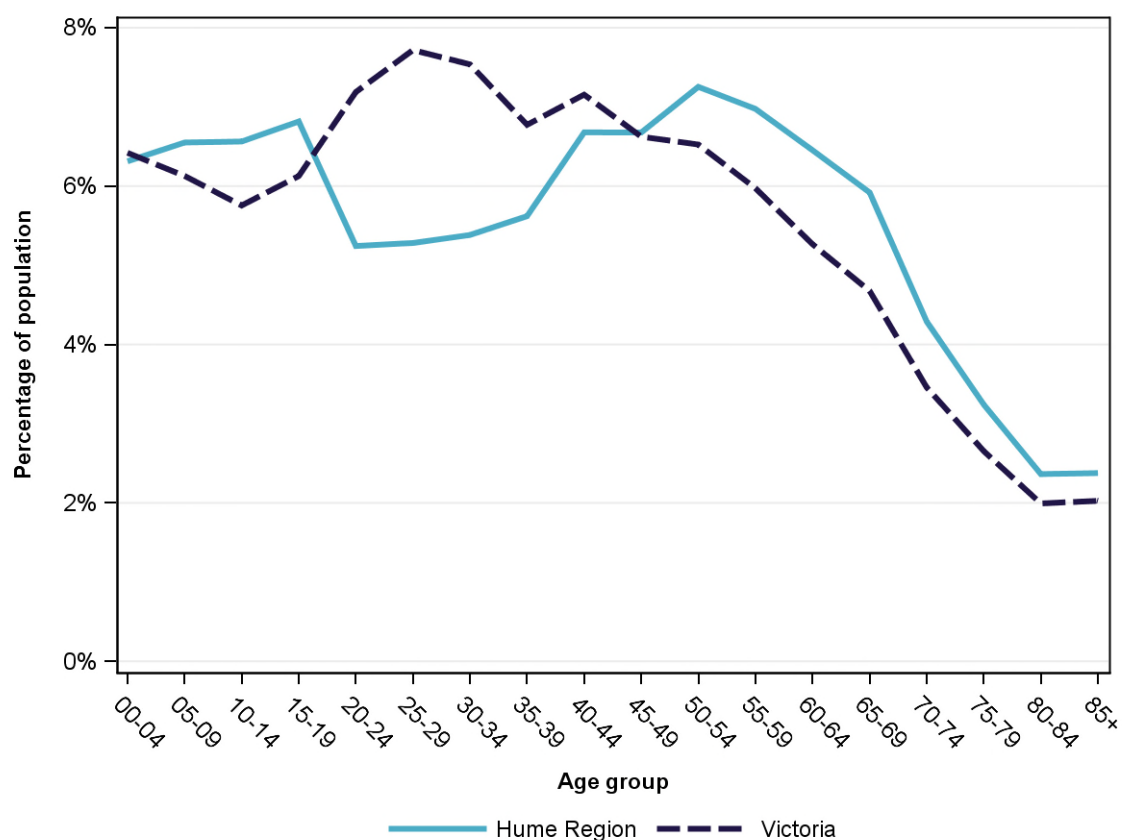
### Annual population change

	Region measure	State measure
Actual annual population change, 2004 - 2014	0.9%	1.7%
Projected annual population change, 2014 - 2024	1.5%	1.7%

### Population by age group and sex, 2014

	Females	Males	Total	Region measure	State measure
00-14	26,073	27,216	53,289	19.4%	18.3%
15-24	15,725	17,356	33,081	12.1%	13.3%
25-44	31,851	31,142	62,993	23.0%	29.2%
45-64	37,500	37,550	75,050	27.4%	24.4%
65-84	21,856	21,530	43,386	15.8%	12.8%
85+	4,051	2,468	6,519	2.4%	2.0%
<i>Total</i>	<i>137,056</i>	<i>137,262</i>	<i>274,318</i>	<i>100.0%</i>	<i>100.0%</i>

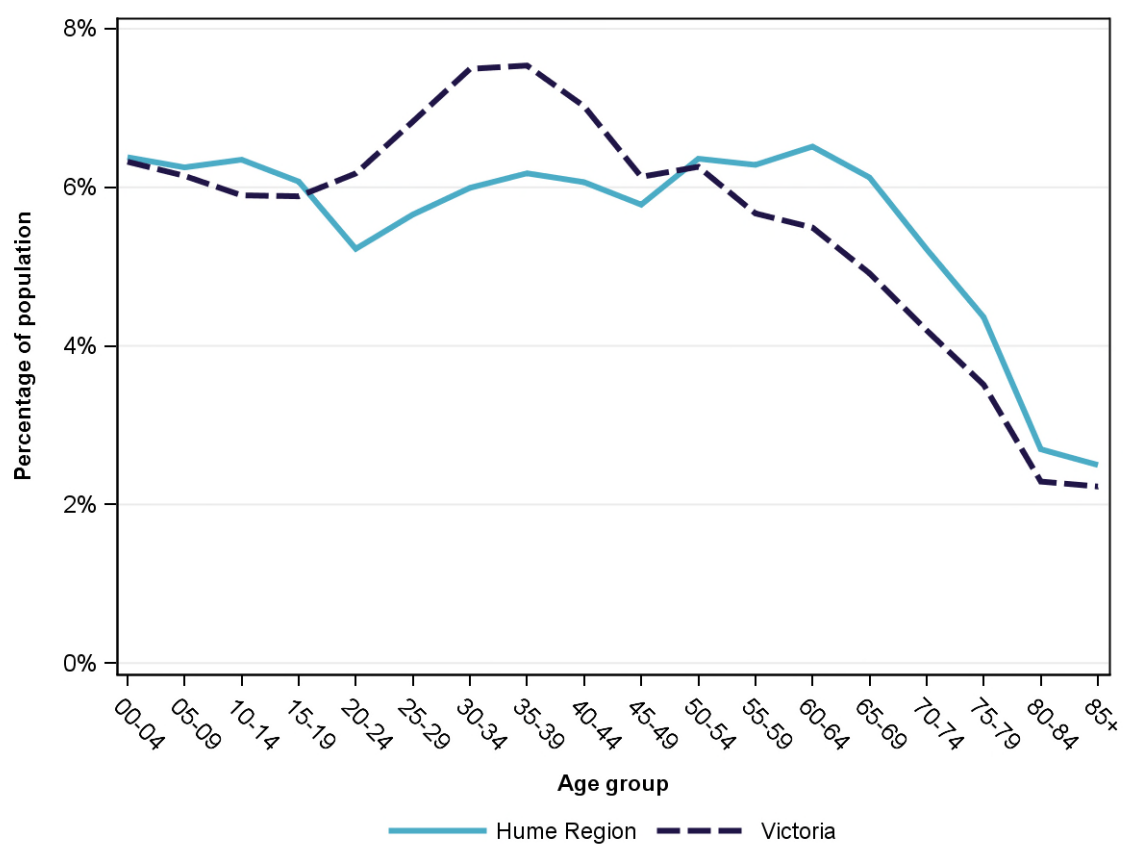
### Population profile, 2014



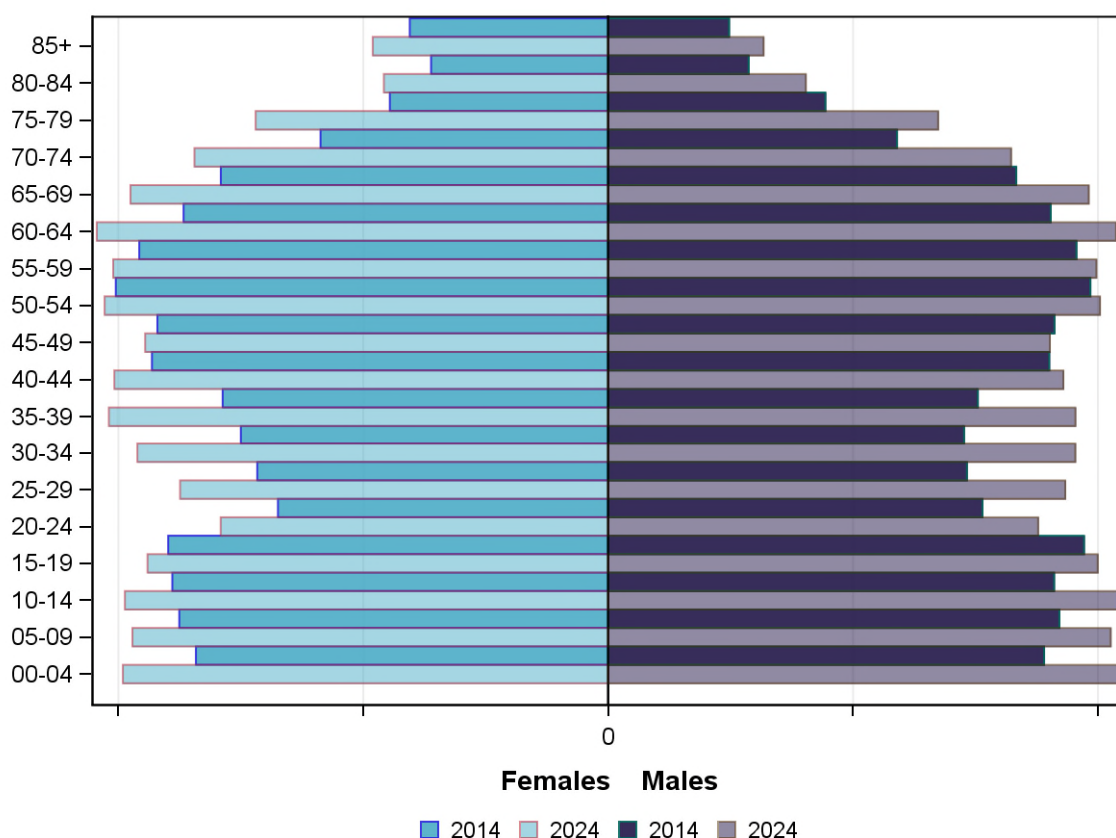
## Projected population by age group and sex, 2024

	Females	Males	Total	Region measure	State measure
00-14	29,491	31,143	60,634	19.0%	18.4%
15-24	17,318	18,772	36,090	11.3%	12.1%
25-44	38,632	37,699	76,331	23.9%	28.9%
45-64	40,285	39,393	79,678	24.9%	23.6%
65-84	29,980	28,805	58,785	18.4%	14.9%
85+	4,808	3,171	7,979	2.5%	2.2%
<i>Total</i>	<i>160,514</i>	<i>158,983</i>	<i>319,497</i>	<i>100.0%</i>	<i>100.0%</i>

## Projected population profile, 2024



## Population projections by age group and sex, 2014 and 2024



## Fertility rate

	Region measure	Region rank	State measure
Total fertility rate	NA	NA	1.8
Teenage fertility rate	17.5	3	10.4

## Diversity

	Region measure	Region rank	State measure
People of Aboriginal and Torres Strait Islander origin	2.1%	2	0.9%
People born overseas	11.1%	7	27.7%
Top 5 overseas countries of birth	United Kingdom	3.1%	
	New Zealand	1.0%	
	Italy	1.0%	
	Germany	0.6%	
	India	0.5%	
People born in a non-English speaking country	6.6%	6	20.9%

	Region measure	Region rank	State measure
People who speak a language other than English at home	6.6%	6	24.2%
Top 5 languages other than English	Italian	1.6%	
	Arabic	0.6%	
	German	0.3%	
	Punjabi	0.3%	
	Turkish	0.3%	
People with low English proficiency	1.2%	5	4.2%
Top 5 ancestries	English	39.3%	
	Australian	28.9%	
	Irish	7.2%	
	Scottish	4.0%	
	Italian	4.0%	
New settler arrivals per 100,000 population	156.4	6	982.5
Humanitarian new settler arrivals	20.0%	3	9.3%
People who believe multiculturalism makes life better	42.1%	7	51.0%

## Social engagement and crime

	Region measure	Region rank	State measure
Family violence incidents per 1,000 population	17.1	3	12.4
Drug usage and possession offences per 1,000 population	5.1	6	5.1
Total offences per 1,000 population	82.7	5	82.6
People who feel safe on streets alone	67.7%	1	61.2%
People who believe other people can be trusted	39.9%	4	39.1%
People who spoke with more than 5 people the previous day	80.3%	3	78.4%
People who are definitely able to get help from neighbours	66.4%	1	54.5%
People who help as volunteer	25.8%	3	19.3%
People who feel valued by society	55.2%	2	52.9%
People who attended a local community event	70.8%	1	55.7%
People who are members of a sports group	32.5%	1	26.5%
People who are members of a religious group	18.0%	5	17.9%
People who rated their community as an active community	91.6%	1	81.8%

	Region measure	Region rank	State measure
People who rated their community as a pleasant environment	96.0%	3	95.1%
People who rated their community as good or very good for community and support groups	87.1%	1	61.3%

## Socio-economic characteristics

### Economic and employment characteristics

	Region measure	Region rank	State measure
Index of Relative Socio-Economic Disadvantage (IRSD)	975	3	1,010
Percentage of highly disadvantaged SA1s	28.9%	3	20.0%
Unemployment rate	6.5%	3	6.3%
People with income less than \$400 per week	42.1%	4	39.9%
Females with income less than \$400 per week	49.3%	4	47.1%
Males with income less than \$400 per week	34.6%	4	32.1%
Families headed by one parent	15.7%	7	15.5%
Percentage of families headed by a female	82.3%	5	82.8%
Percentage of families headed by a male	17.7%	5	17.2%
Low income families with children	10.7%	3	8.7%
Median household income	NA	NA	\$1,216
Gaming machine losses per adult population	\$373	9	\$553
People who delayed medical consultation, unable to afford	16.0%	4	14.4%
People who delayed purchasing prescribed medication, unable to afford	12.5%	5	11.1%
People with food insecurity	5.5%	4	4.6%

### Housing, homelessness and transport characteristics

	Region measure	Region rank	State measure
Households with mortgage stress	12.7%	1	11.4%
Households with rental stress	26.2%	5	25.1%
Rental housing that is affordable	73.8%	1	19.1%
Median house price	NA	NA	\$393,000
Median weekly rent for 3-bedroom home	\$280	6	\$340
New dwellings approved per 1,000 population	7.3	8	11.6
Social housing dwellings	5,302	NA	85,386

	Region measure	Region rank	State measure
Social housing as a percentage of total dwellings	4.6%	4	3.9%
Homeless people (estimated) per 1,000 population	3.7	4	4.0
Journeys to work which are by car	68.7%	5	66.2%
Journeys to work which are by public transport	1.5%	8	11.1%
People with at least 2 hour daily commute	4.7%	9	11.6%
Dwellings with no motor vehicle	6.1%	9	8.7%

## Education characteristics

	Region measure	Region rank	State measure
Full-time equivalent students	46,335	NA	914,073
Year 9 students attaining national minimum literacy standards	90.5%	5	92.0%
Year 9 students attaining national minimum numeracy standards	94.8%	6	95.6%
People 19 years old having completed year 12	80.0%	7	88.2%
People who did not complete year 12	61.4%	2	43.7%
People who completed a higher education qualification	27.7%	8	45.7%
Students attending public schools	64.3%	4	61.6%

## Health and wellbeing

### Health conditions

	Region measure	Region rank	State measure
People reporting asthma	12.2%	2	10.9%
People reporting type 2 diabetes	5.4%	3	5.0%
People reporting high blood pressure	26.0%	7	25.9%
People reporting heart disease	7.4%	4	6.9%
People reporting osteoporosis	5.2%	6	5.3%
People reporting arthritis	20.8%	5	19.8%
People with dementia (estimated) per 1,000 population	19.0	4	16.8
People reporting being obese	23.6%	3	18.8%
Females reporting being obese	20.9%	2	17.2%
Males reporting being obese	26.1%	2	20.4%
People reporting being pre-obese	32.2%	4	31.2%
Females reporting being pre-obese	28.5%	1	24.3%



	Region measure	Region rank	State measure
Males reporting being pre-obese	36.0%	8	38.4%
Cancer incidence per 1,000 population	6.4	3	5.2
Cancer incidence per 1,000 females	5.8	3	4.8
Cancer incidence per 1,000 males	7.0	3	5.6
People reporting poor dental health	6.9%	4	5.6%
Notifications of pertussis per 100,000 population	41.9	9	80.9
Notifications of influenza per 100,000 population	287.6	4	293.8
Notifications of chlamydia per 100,000 population	266.8	8	330.7

## Health behaviours

	Region measure	Region rank	State measure
People aged over 18 who are current smokers	16.1%	2	13.1%
People at increased risk of alcohol-related harm on a single occasion of drinking	50.0%	2	42.5%
People who do not meet dietary guidelines for either fruit or vegetable consumption	50.8%	2	48.6%
Females who do not meet dietary guidelines for either fruit or vegetable consumption	41.6%	7	43.4%
Males who do not meet dietary guidelines for either fruit or vegetable consumption	60.1%	2	54.0%
People who drink sugar-sweetened soft drink every day	15.0%	2	11.2%
People who do not meet physical activity guidelines	55.2%	3	54.0%
Females who do not meet physical activity guidelines	53.8%	7	56.1%
Males who do not meet physical activity guidelines	56.5%	1	52.0%
Breast cancer screening participation	45.2%	9	52.0%
Cervical cancer screening participation	61.5%	3	61.5%
Bowel cancer screening participation	NA	NA	37.6%

## Children and young person characteristics

	Region measure	Region rank	State measure
Babies with low birth weight	6.8%	4	6.6%
Infants fully breastfed at 3 months	48.0%	7	51.8%
Children fully immunised between 24 and 27 months	91.2%	4	90.5%
Children attending 3.5 year old maternal and child health checks	68.6%	3	66.1%
Kindergarten participation	94.3%	9	98.1%

	Region measure	Region rank	State measure
Children with kindergarten fee subsidy	36.3%	3	26.8%
Children with emotional or behavioural problems at school entry	5.3%	5	4.6%
Children with speech or language problems at school entry	18.3%	2	14.2%
Children developmentally vulnerable in one or more domains	21.8%	3	19.5%
Children developmentally vulnerable in two or more domains	11.2%	3	9.5%

## Aged and disability characteristics

	Region measure	Region rank	State measure
People with need for assistance with core activity	5.7%	4	5.0%
People of all ages with severe and profound disability living in the community	4.5%	4	4.0%
People aged over 65 years with severe and profound disability living in the community	12.4%	4	13.7%
People receiving disability services support per 1,000 population	11.6	3	8.9
Disability support pension recipients per 1,000 eligible population	74.4	4	51.3
People aged over 75 years who live alone	37.7%	5	35.9%
Percentage of people aged over 75 years who live alone who are female	71.7%	8	73.9%
Percentage of people aged over 75 years who live alone who are male	28.3%	2	26.1%
Aged care residential places	3,006	NA	51,131
Age pension recipients per 1,000 eligible population	768.6	2	707.4

## Life expectancy, wellbeing, injury and mortality

	Region measure	Region rank	State measure
Female life expectancy	84.1	3	84.4
Male life expectancy	79.3	4	80.3
People reporting fair or poor health status	14.5%	7	15.9%
Females reporting fair or poor health status	14.3%	5	15.6%
Males reporting fair or poor health status	14.8%	7	16.2%
People reporting high/very high psychological distress	12.9%	5	12.6%
People reporting adequate work-life balance	NA	NA	53.1%

	Region measure	Region rank	State measure
Unintentional injuries treated in hospital per 1,000 population	84.6	3	61.0
Intentional injuries treated in hospital per 1,000 population	4.0	3	3.0
Unintentional injuries due to falls	33.7%	8	38.7%
Indirect standardised death rate per 1,000 population	NA	NA	5.3
Avoidable deaths among people aged less than 75 years, all causes, per 100,000 population	133.0	3	109.0
Avoidable deaths among people aged less than 75 years, cancer, per 100,000 population	24.4	5	23.8
Avoidable deaths among people aged less than 75 years, cardiovascular diseases, per 100,000 population	27.3	2	23.0
Avoidable deaths among people aged less than 75 years, respiratory diseases, per 100,000 population	10.9	3	8.1

## Service System

### Providers

Primary Health Network (PHN)	NA
Primary Care Partnership (PCP)	NA
Most frequently attended public hospital	Goulburn Valley Health [Shepparton]

### Access

	Region measure	Region rank	State measure
General practitioners per 1,000 population	1.2	3	1.2
General practice clinics per 1,000 population	0.3	5	0.3
Allied health service sites per 1,000 population	0.9	4	0.9
Dental service sites per 1,000 population	0.2	9	0.3
Pharmacies per 1,000 population	0.2	6	0.2
People who could definitely access community services and resources	88.5%	2	85.2%
People who live near public transport	34.3%	8	73.9%
People with private health insurance	37.6%	8	48.0%

## Hospital utilisation

	Region measure	Region rank	State measure
Hospital inpatient separations per 1,000 population	416.2	8	441.6
Percentage of inpatient separations from public hospitals	76.9%	2	61.4%
Percentage of inpatient separations from private hospitals	23.1%	8	38.6%
Inpatient separations from most frequently attended public hospital	25.9%	5	NA
Average length of stay (days), all hospital inpatients	3.0	1	2.8
Average length of stay (days), public hospital inpatients	3.1	2	3.0
Average length of stay (days), private hospital inpatients	2.7	1	2.4
Annual change in inpatient separations between 2004/05 and 2014/15	1.7%	9	3.0%
Projected annual change in inpatient separations between 2014/15 and 2026/27	2.8%	4	3.1%
ACSC (PPH) separations for all conditions per 1,000 population	27.2	5	26.0
ACSC (PPH) separations for acute conditions per 1,000 population	11.0	7	11.2
ACSC (PPH) separations for chronic conditions per 1,000 population	15.4	3	13.3
ACSC (PPH) separations for vaccine preventable conditions per 1,000 population	1.0	7	1.7
Average length of stay (days), all ACSC (PPH) separations	4.6	1	4.0
Emergency department presentations per 1,000 population	313.2	3	263.0
Annual change in emergency department presentations between 2004/05 and 2014/15	1.8%	9	3.0%
Projected annual change in emergency department presentations between 2014/15 and 2026/27	2.6%	7	3.1%
Primary care type emergency department presentations per 1,000 population	136.7	3	103.0

## Child protection, family services and youth justice utilisation

	Region measure	Region rank	State measure
Child protection investigations completed per 1,000 eligible population	25.6	3	19.4
Child protection substantiations per 1,000 population eligible population	14.4	3	11.4
Child FIRST assessments per 1,000 eligible population	30.7	1	10.1

## Health and aged services utilisation

	Region measure	Region rank	State measure
GP attendances per 1,000 population	5,984.5	3	5,889.0
GP attendances per 1,000 females	6,856.6	3	6,740.9
GP attendances per 1,000 males	5,113.7	4	5,019.2
Specialist attendances per 1,000 population	1,162.5	8	1,363.5
Diagnostic imaging services per 1,000 population	1,096.7	1	970.6
People who attended a GP	92.6%	3	90.1%
Females who attended a GP	97.6%	3	94.4%
Males who attended a GP	87.6%	2	85.6%
People who attended a specialist	34.5%	5	34.3%
Females who attended a specialist	37.2%	5	37.6%
Males who attended a specialist	31.9%	5	30.9%
GP attendances bulk billed	79.7%	7	82.8%
Specialist attendances bulk billed	32.7%	5	30.4%
Diagnostic imaging services bulk billed	81.1%	2	75.0%
People receiving prescriptions	72.0%	5	71.1%
Females receiving prescriptions	78.0%	5	76.9%
Males receiving prescriptions	66.0%	5	65.3%
Average patient contribution for prescriptions	\$8.52	7	\$9.09
HACC clients aged less than 65 years per 1,000 target population	295.2	6	305.3
HACC clients aged 65 years and over per 1,000 target population	948.4	5	737.8
Clients that received Alcohol & Drug Treatment Services per 1,000 population	4.2	8	5.0
Registered mental health clients per 1,000 population	19.0	1	11.9